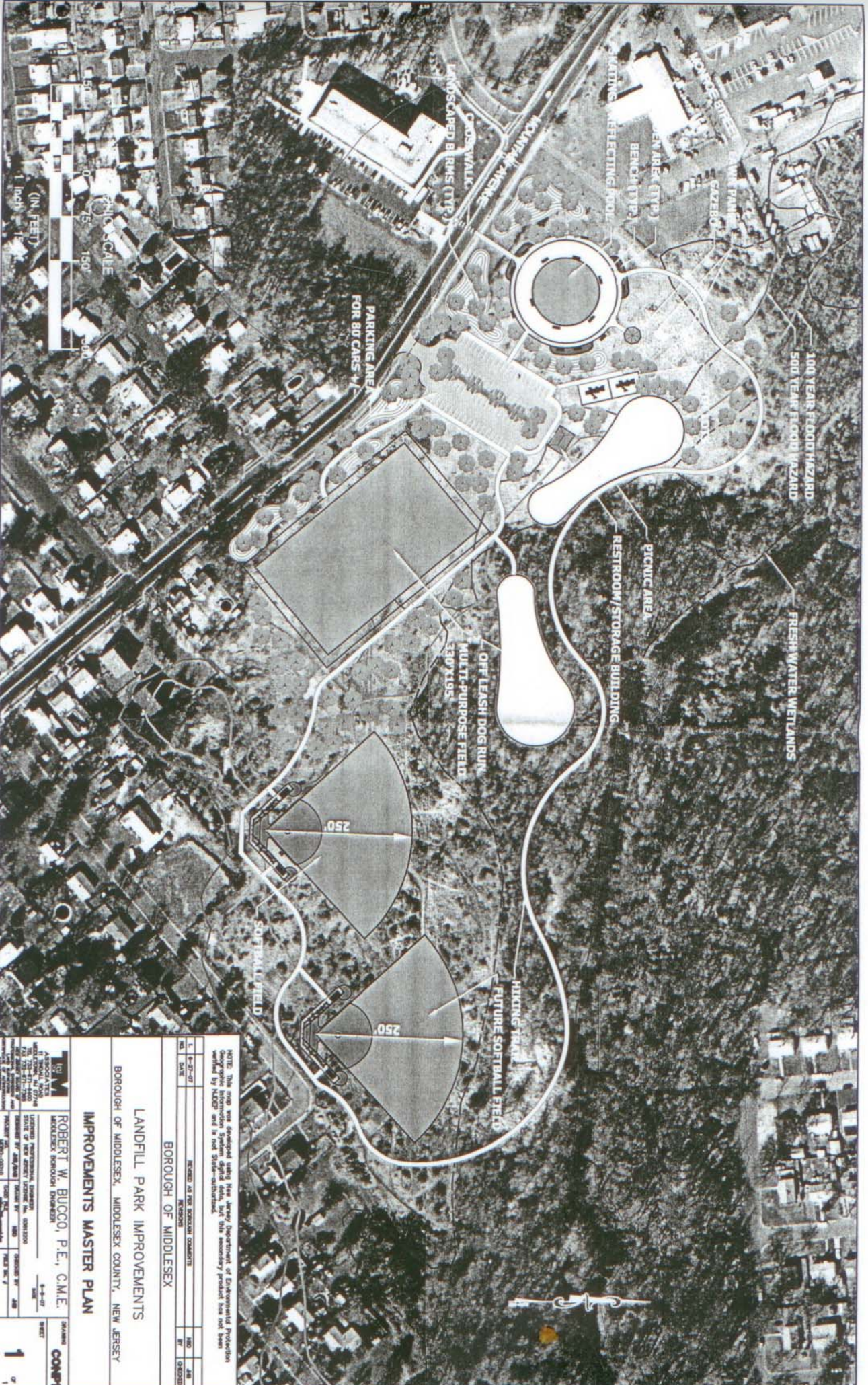


THE COPYING OR REUSE OF THIS DOCUMENT, OR PORTIONS THEREOF, FOR OTHER THAN THE ORIGINAL PROJECT OR THE PURPOSE ORIGINALLY INTENDED, WITHOUT THE WRITTEN PERMISSION OF THE ASSOCIATE IS PROHIBITED.



NOTE: This plan was developed using the Agency Department of Environmental Protection. Specific information should be obtained from the secondary project file for the site.

NO.	DATE	REVISIONS	BY	CHKD.	APP.
1	8-27-07	REVISED AS PER BOROUGH COMMENTS			

BOROUGH OF MIDDLESEX
LANDFILL PARK IMPROVEMENTS
BOROUGH OF MIDDLESEX, MIDDLESEX COUNTY, NEW JERSEY

IMPROVEMENTS MASTER PLAN

ROBERT W. BUCCO, P.E., C.M.E.
 MIDDLESEX BOROUGH ENGINEER

	DATE: 8-27-07 SHEET: 1 OF 1
PROJECT: LANDFILL PARK IMPROVEMENTS DRAWING NO.: 050-00018	DRAWING: CON-11